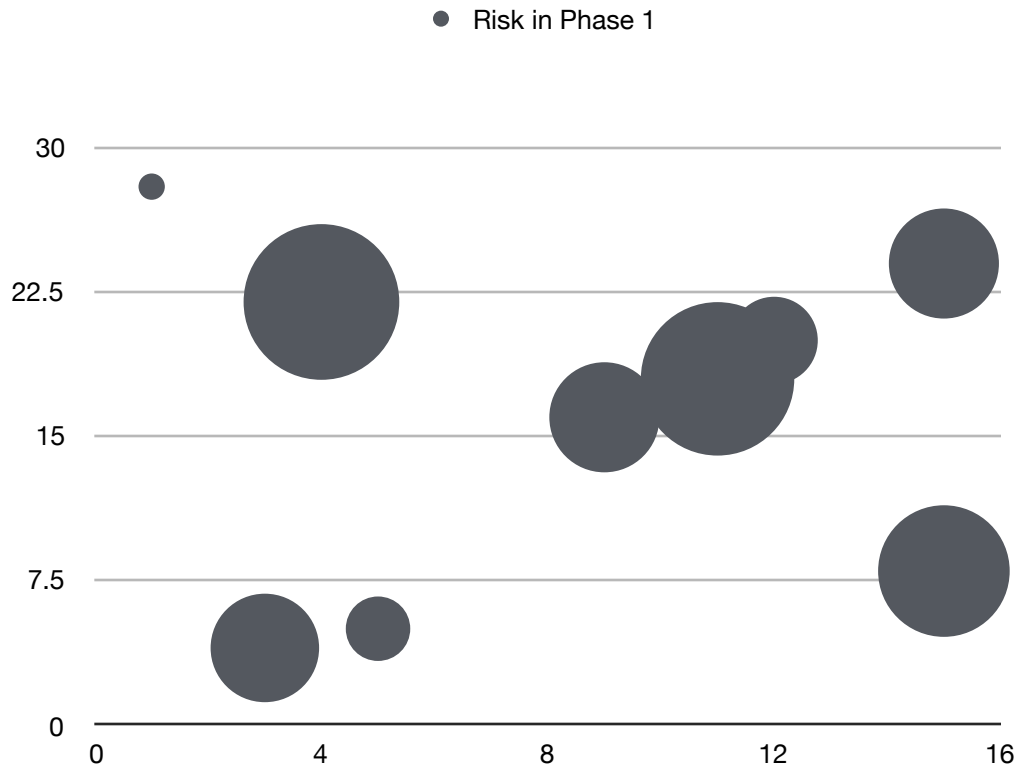
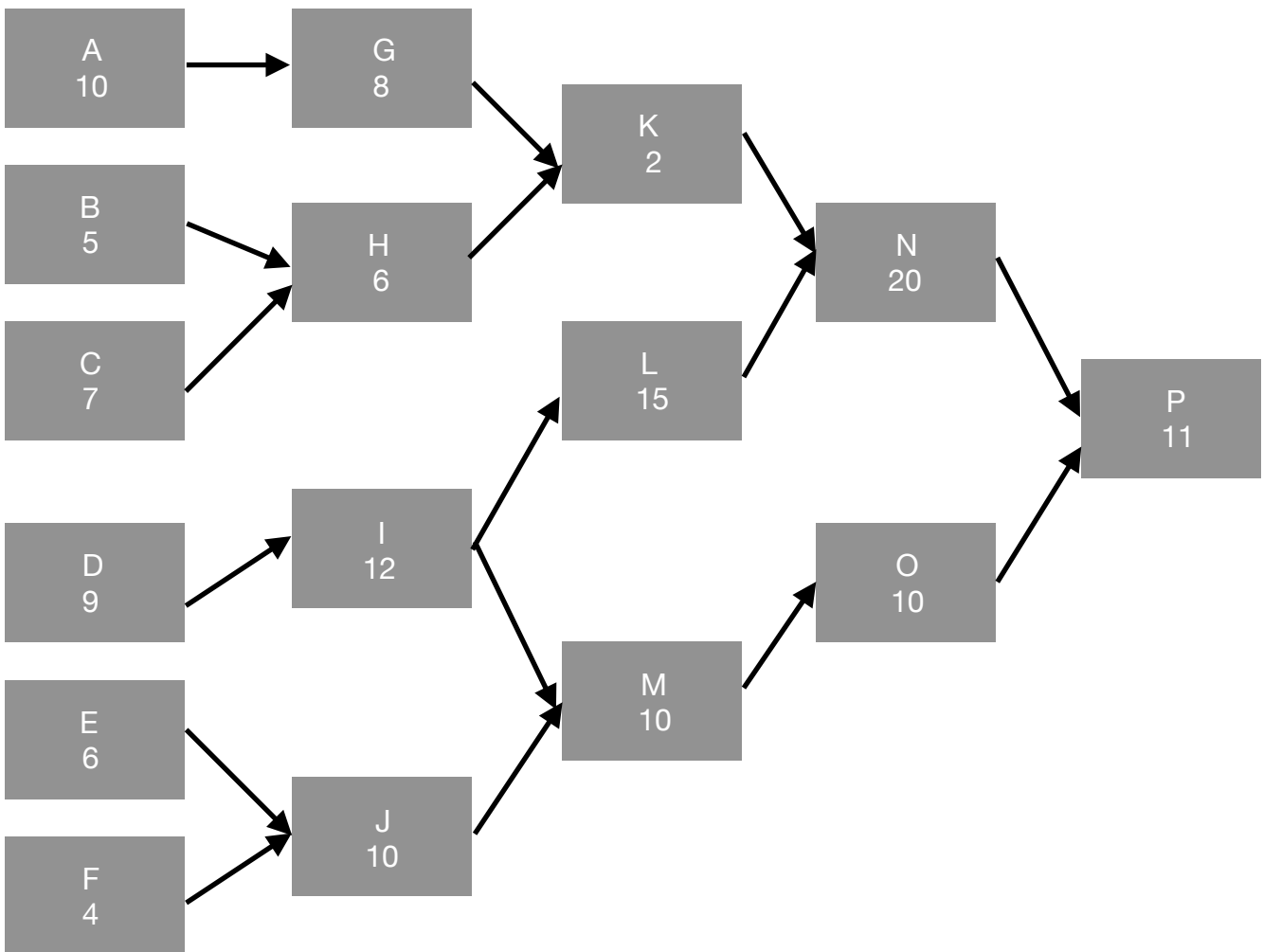


1. You are prepping a presentation and documentation to explain high level risk to your customer. The table below was created by your project risk expert to illustrate the risk in the first phase of your project, you are also preparing the verbiage explains the high level risk and overall risk strategies. What project document are you creating.



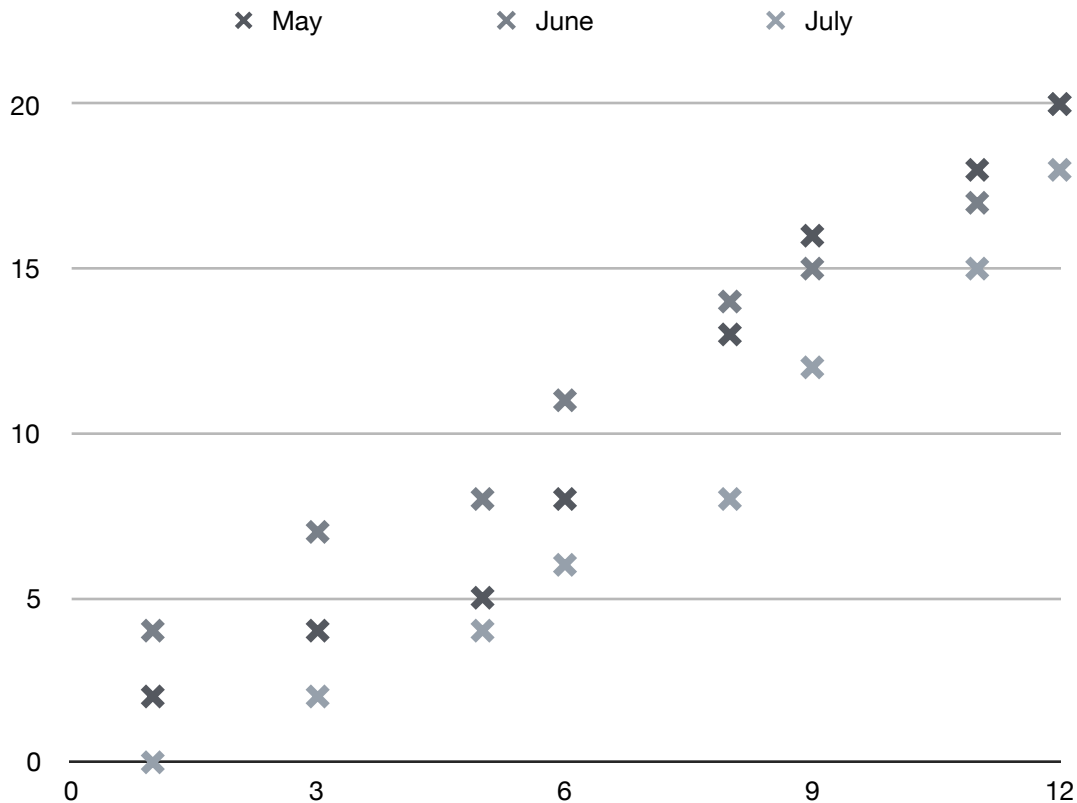
- a. The Risk Management Plan
- b. A bubble chart
- c. A Risk report
- d. A presentation telling the sponsor to back off

2. You are the project manager for Kruger Smoothing, you have discovered that the project is endanger of missing the deadline. You used the critical path method to manager your schedule in an attempt to better manage your activities. According to the chart below what should do.



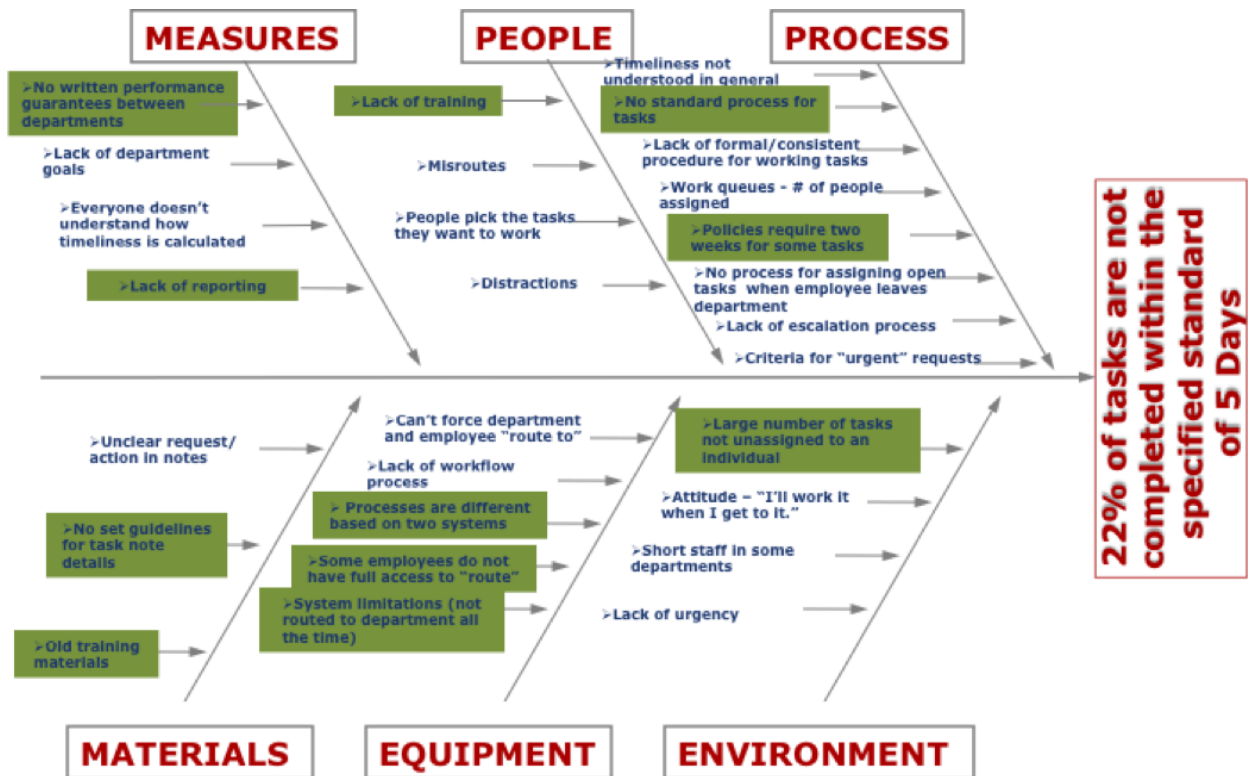
- Depending on the cost benefit analysis you should crash on activities D,I,L,N or P
- You should smooth activities D,I,L,N or P to reduce friction between team members
- You would only crash activity L due to it being critical to hitting the deadline
- Resource soothing is for companies like Kurger Smoothing in order to reduce conflict between resources

3. The chart below is used to explain the frequency of events in your quality management plan. Your sponsor asked you for a chart that not only shows the frequency of the events but also the number of events in each problem area. You tried to submit the chart below but the sponsor kicked it back to you informing that this chart doesn't display the information in the format she had asked for. What QC7 chart should have been used?



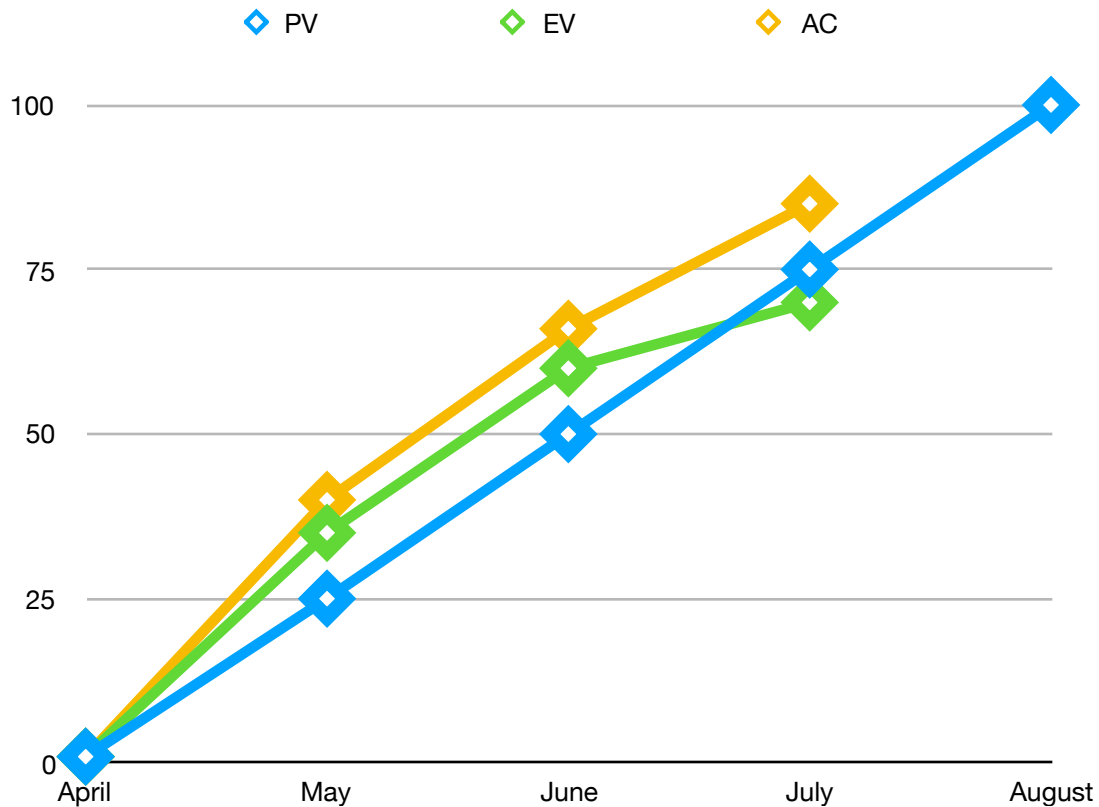
- Quality control measurements
- Pareto chart
- Scatter diagram
- Agile iteration durn down frequency chart

4. You have been asked to determine the root cause of for the failure of a testing system. As the project manager you decided to use the below chart to show the multiple causes to failure of that system. What are you doing?



- You are attempting to confuse the sponsor with a digram, that should buy you the time necessary to find a new job
- You are using Tuckman's ideas on recognizing how different problem areas cause failure
- Using a cause and effect diagram to illustrate SIPOC
- Using a "Why why diagram" because, according to Ishikawa the chart above is used to show the different causes for an effect

5. You're the project manager for an architecture firm, you are preparing a report for the customer to explain how the project is doing against the performance measurement baseline. According to the chart below which statement is true?



- a. You should focus on team building because at this point friendship is all you have left
- b. You should find ways of hiding expenses to make the project look like it is on track
- c. The project is behind schedule and under budget
- d. The TPCI will be more than 1 and achieving it will help get you back on track